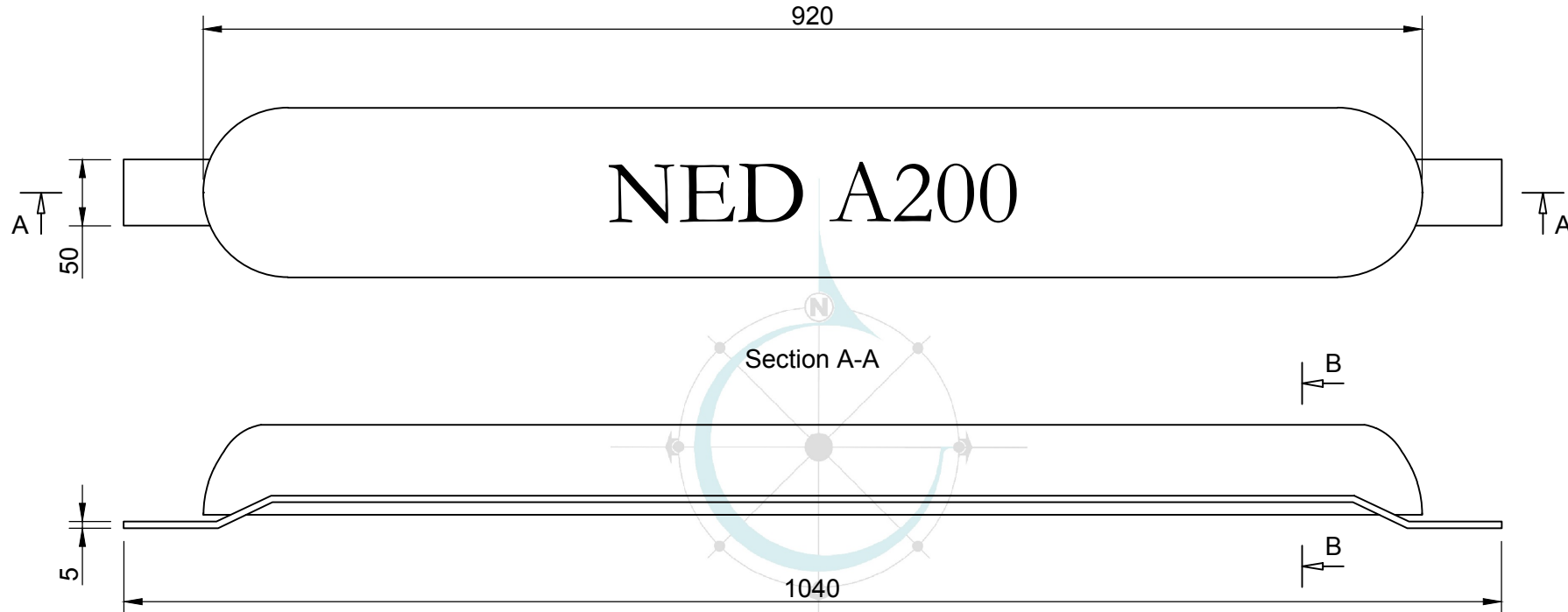
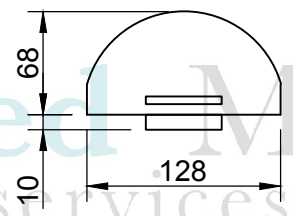


# NED A200



Section B-B



Ned Marine services B.V.

**ALUMINIUM PL742 ALLOY SPECIFICATION**

Components:	Capacity: 2680 Ah/kg
Zn 3,5-5% range	Efficiency: 90%
Fe 0,16% max	Potential: - 1110 mV Cu -
Cu 0,01% max	CuSO <sub>4</sub> electrolyte artificial sea water DIN 50905
In 0,02-0,05% max	Insert quality: Plate, bar section EN10025 Grade S235/S275
Si 0,1% max	Insert welding: All fabrication of steel inserts are according EN10287 and EN10288
Others 0,04% max	
Al remaining	

NET WEIGHT: 18,0 kg  
 GROSS WEIGHT: 20,0 kg  
 INSERT WEIGHT: 2,0 kg

Company address:  
 Tinstraat 109  
 2984AN Ridderkerk  
 The Netherlands  
 Tel. +31 (0) 180 420 055  
 Fax. +31 (0) 180 499 810  
 E-mail. info@nedmarine.com  
 www.nedmarine.com



Drawing name: NED A200			
Drawing No.: 17.0066	Rev: 0	Sheet: 1/1	
Drawn: R.J.	Approved: G.M.	Scale: -	Date: 15/05/2017

Ned T.D. 16 003