

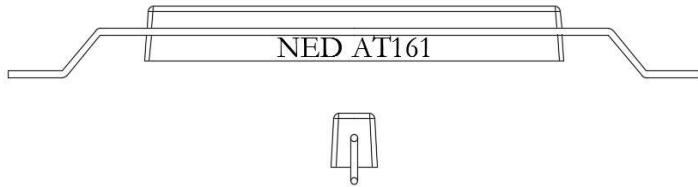
Product catalogue

Anodes

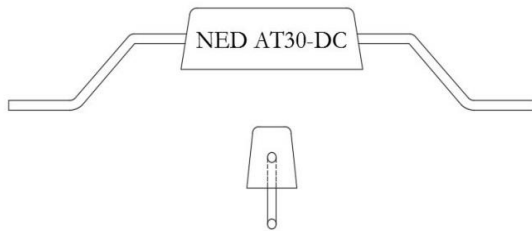


Aluminium

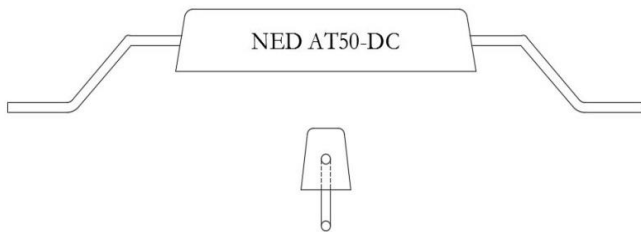
Tank

NED AT161

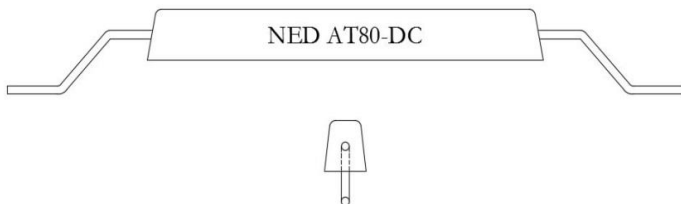
Dimensions	Metric	Imperial
Net weight	: 15,0 kg	33,1 lb
Gross weight	: 16,1 kg	35,5 lb
Length	: 750 mm	2' 5,5"
Length with inserts	: 1250 mm	4' 1,2"
Width top	: 75 mm	3,0"
Width bottom	: 85 mm	3,3"
Width inserts	: 12 mm	0,5"
Height	: 96 mm	3,8"
Height inserts	: 12 mm	0,5"
Clearance	: 30 mm	1,2"

NED AT30-DC

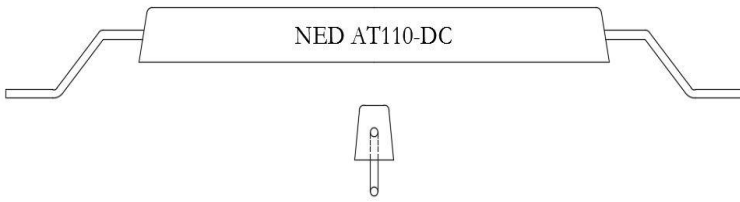
Dimensions	Metric	Imperial
Net weight	: 2,5 kg	5,5 lb
Gross weight	: 3,0 kg	6,6 lb
Length	: 220 mm	8,7"
Length with inserts	: 680 mm	2' 2,8"
Width top	: 50 mm	2,0"
Width bottom	: 65 mm	2,6"
Width inserts	: 12 mm	0,5"
Height	: 75 mm	3,0"
Height inserts	: 12 mm	0,5"
Clearance	: 50 mm	2,0"

NED AT50-DC

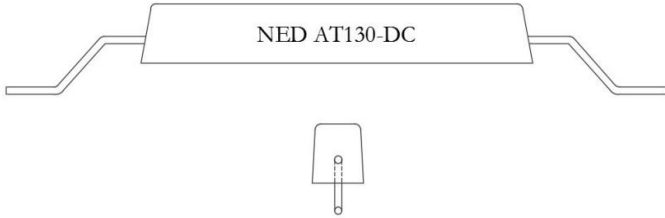
Dimensions	Metric	Imperial
Net weight	: 4,3 kg	9,5 lb
Gross weight	: 5,0 kg	11,0 lb
Length	: 380 mm	1' 3,0"
Length with inserts	: 840 mm	2' 9,1"
Width top	: 50 mm	2,0"
Width bottom	: 65 mm	2,6"
Width inserts	: 12 mm	0,5"
Height	: 75 mm	3,0"
Height inserts	: 12 mm	0,5"
Clearance	: 50 mm	2,0"

NED AT80-DC

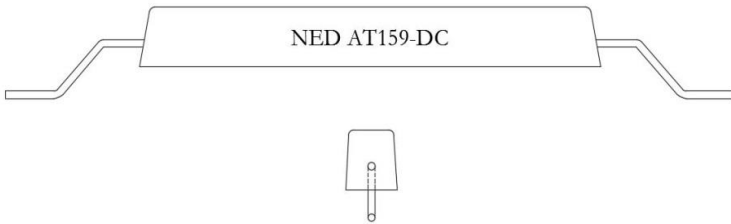
Dimensions	Metric	Imperial
Net weight	: 7,1 kg	15,7 lb
Gross weight	: 8,0 kg	17,6 lb
Length	: 310 mm	1' 0,2"
Length with inserts	: 1070 mm	3' 6,1"
Width top	: 50 mm	2,0"
Width bottom	: 65 mm	2,6"
Width inserts	: 12 mm	0,5"
Height	: 75 mm	3,0"
Height inserts	: 12 mm	0,5"
Clearance	: 50 mm	2,0"

NED AT110-DC

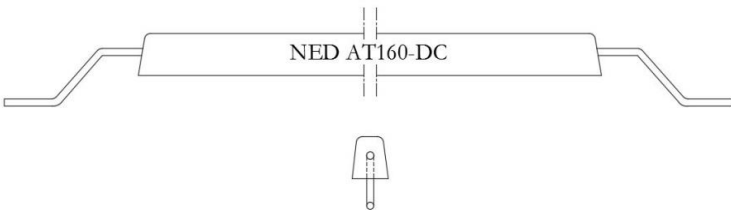
Dimensions	Metric	Imperial
Net weight	: 09 kg	20 lb
Gross weight	: 10 kg	22 lb
Length	: 765 mm	2' 06"
Length with inserts	: 1225 mm	4' 00"
Width top	: 50 mm	02"
Width bottom	: 65 mm	03"
Width inserts	: 12 mm	00"
Height	: 75 mm	03"
Height inserts	: 12 mm	00"
Clearance	: 50 mm	02"

NED AT130-DC

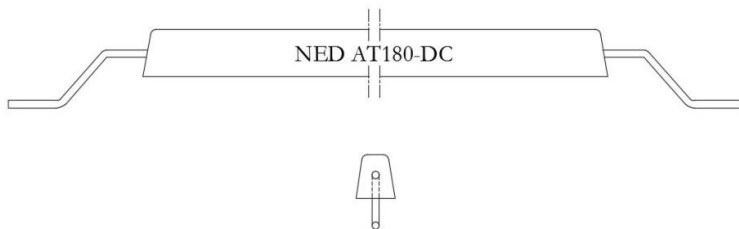
Dimensions	Metric	Imperial
Net weight	: 12 kg	27 lb
Gross weight	: 13 kg	29 lb
Length	: 630 mm	2' 01"
Length with inserts	: 1090 mm	3' 07"
Width top	: 75 mm	03"
Width bottom	: 85 mm	03"
Width inserts	: 12 mm	00"
Height	: 95 mm	04"
Height inserts	: 12 mm	00"
Clearance	: 50 mm	02"

NED AT159-DC

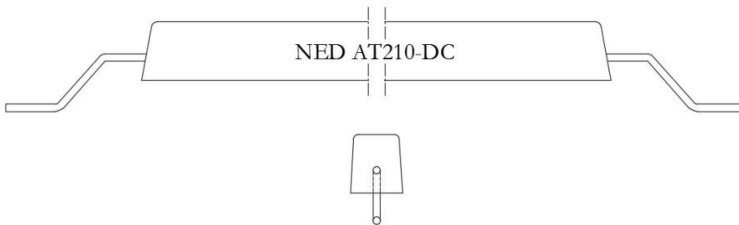
Dimensions	Metric	Imperial
Net weight	: 15 kg	32 lb
Gross weight	: 16 kg	34 lb
Length	: 750 mm	2' 06"
Length with inserts	: 1210 mm	3' 12"
Width top	: 75 mm	03"
Width bottom	: 85 mm	03"
Width inserts	: 12 mm	00"
Height	: 95 mm	04"
Height inserts	: 12 mm	00"
Clearance	: 50 mm	02"

NED AT160-DC

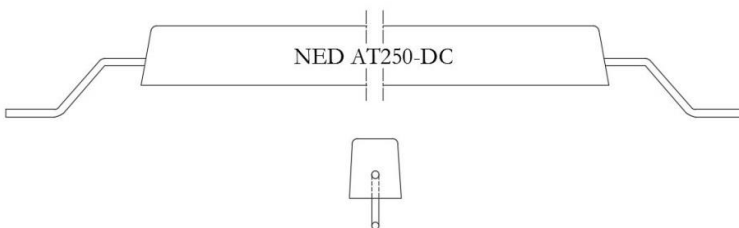
Dimensions	Metric	Imperial
Net weight	: 14 kg	30 lb
Gross weight	: 15 kg	34 lb
Length	: 1500 mm	4' 11"
Length with inserts	: 1960 mm	6' 05"
Width top	: 45 mm	02"
Width bottom	: 60 mm	02"
Width inserts	: 12 mm	00"
Height	: 68 mm	03"
Height inserts	: 12 mm	00"
Clearance	: 50 mm	02"

NED AT180-DC

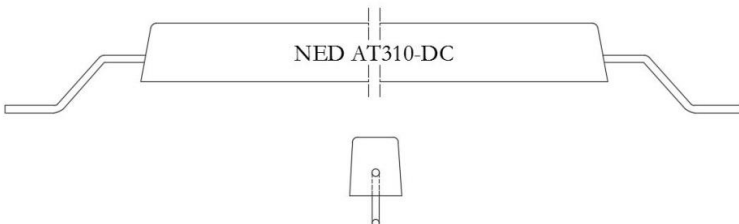
	Dimension	Metric	Imperial
Net weight	:	16 kg	34 lb
Gross weight	:	17 kg	38 lb
Length	:	1500 mm	4' 11"
Length with inserts	:	1960 mm	6' 05"
Width top	:	45 mm	02"
Width bottom	:	65 mm	03"
Width inserts	:	12 mm	00"
Height	:	70 mm	03"
Height inserts	:	12 mm	00"
Clearance	:	50 mm	02"

NED AT210-DC

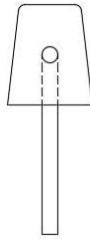
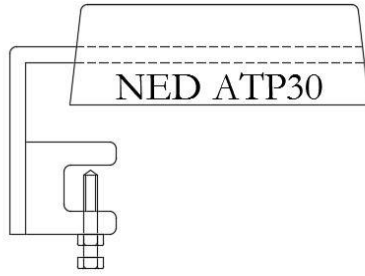
	Dimensions	Metric	Imperial
Net weight	:	19 kg	43 lb
Gross weight	:	21 kg	45 lb
Length	:	1000 mm	3' 03"
Length with inserts	:	1460 mm	4' 09"
Width top	:	75 mm	03"
Width bottom	:	85 mm	03"
Width inserts	:	12 mm	00"
Height	:	95 mm	04"
Height inserts	:	12 mm	00"
Clearance	:	50 mm	02"

NED AT250-DC

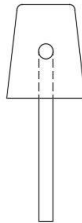
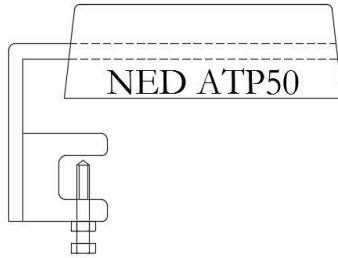
	Dimensions	Metric	Imperial
Net weight	:	24 kg	52 lb
Gross weight	:	25 kg	55 lb
Length	:	1220 mm	4' 00"
Length with inserts	:	1680 mm	5' 06"
Width top	:	75 mm	03"
Width bottom	:	85 mm	03"
Width inserts	:	12 mm	00"
Height	:	95 mm	04"
Height inserts	:	12 mm	00"
Clearance	:	50 mm	02"

NED AT310-DC

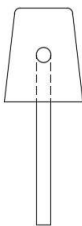
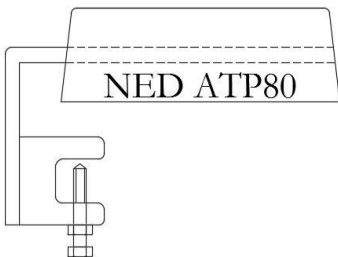
	Dimensions	Metric	Imperial
Net weight	:	29 kg	64 lb
Gross weight	:	31 kg	68 lb
Length	:	1500 mm	4' 11"
Length with inserts	:	1960 mm	6' 05"
Width top	:	75 mm	03"
Width bottom	:	85 mm	03"
Width inserts	:	12 mm	00"
Height	:	95 mm	04"
Height inserts	:	12 mm	00"
Clearance	:	50 mm	02"

NED ATP30**Dimensions**

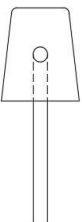
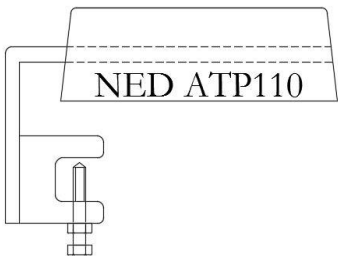
	Metric	Imperial
Net weight	: 03 kg	06 lb
Gross weight	: 03 kg	06 lb
Length	: 220 mm	09"
Length with inserts	: 270 mm	11"
Width top	: 65 mm	03"
Width inserts	: 12 mm	00"
Height	: 75 mm	03"
Height inserts	: 12 mm	00"
Clearance	: 98 mm	04"

NED ATP50**Dimensions**

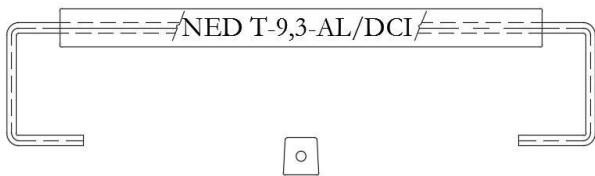
	Metric	Imperial
Net weight	: 04 kg	09 lb
Gross weight	: 05 kg	11 lb
Length	: 380 mm	1' 03"
Length with inserts	: 430 mm	1' 05"
Width top	: 65 mm	03"
Width inserts	: 12 mm	00"
Height	: 75 mm	03"
Height inserts	: 12 mm	00"
Clearance	: 98 mm	04"

NED ATP80**Dimensions**

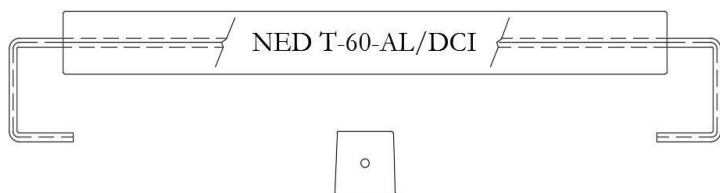
	Metric	Imperial
Net weight	: 07 kg	16 lb
Gross weight	: 08 kg	17 lb
Length	: 610 mm	2' 00"
Length with inserts	: 660 mm	2' 02"
Width top	: 65 mm	03"
Width inserts	: 12 mm	00"
Height	: 75 mm	03"
Height inserts	: 12 mm	00"
Clearance	: 98 mm	04"

NED ATP110**Dimensions**

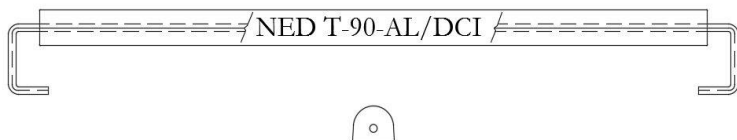
	Metric	Imperial
Net weight	: 09 kg	20 lb
Gross weight	: 10 kg	22 lb
Length	: 765 mm	2' 06"
Length with inserts	: 815 mm	2' 08"
Width top	: 65 mm	03"
Width inserts	: 12 mm	00"
Height	: 75 mm	03"
Height inserts	: 12 mm	00"
Clearance	: 98 mm	04"

NED T-9,3-AL.DCI

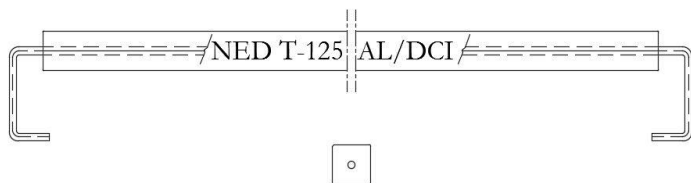
	Dimension	Metric	Imperial
Net weight	:	01 kg	02 lb
Gross weight	:	01 kg	03 lb
Length	:	400 mm	1' 04"
Length with inserts	:	480 mm	1' 07"
Width top	:	30 mm	01"
Width inserts	:	8 mm	00"
Height	:	30 mm	01"
Height inserts	:	8 mm	00"
Clearance	:	75 mm	03"

NED T-60-AL.DCI

	Dimensions	Metric	Imperial
Net weight	:	06 kg	13 lb
Gross weight	:	06 kg	14 lb
Length	:	600 mm	1' 12"
Length with inserts	:	700 mm	2' 04"
Width top	:	60 mm	02"
Width inserts	:	8 mm	00"
Height	:	60 mm	02"
Height inserts	:	8 mm	00"
Clearance	:	60 mm	02"

NED T-90-AL.DCI

	Dimensions	Metric	Imperial
Net weight	:	09 kg	20 lb
Gross weight	:	10 kg	23 lb
Length	:	1100 mm	3' 07"
Length with inserts	:	1190 mm	3' 11"
Width top	:	68 mm	03"
Width inserts	:	12 mm	00"
Height	:	56 mm	02"
Height inserts	:	12 mm	00"
Clearance	:	70 mm	03"

NED T-125-AL.DCI

	Dimensions	Metric	Imperial
Net weight	:	13 kg	28 lb
Gross weight	:	14 kg	31 lb
Length	:	1200 mm	3' 11"
Length with inserts	:	1300 mm	4' 03"
Width top	:	63 mm	02"
Width inserts	:	12 mm	00"
Height	:	63 mm	02"
Height inserts	:	12 mm	00"
Clearance	:	105 mm	04"

PERFECTION IN INSPECTION

PERFECTION FOR PROTECTION



- * Ultrasonic Thickness measurements
- * New Building Inspections
- * Coating Inspections
- * Pré Conditional Survey
- * Dry-Dock Supervision
- * Superintendence
- * Hull Condition Monitoring
- * P&S Surveys
- * Hatch Tightness Testing
- * Leak Detection
- * Reporting
- * NDT Inspections

- * Magnetic Core Drilling
Technology and Products
- * Workshop Equipment



- * Sacrificial Anodes
- * Maritime Products

Version 1.0

Ned Marine Services B.V. – Tinstraat 109 – 2984 AN Ridderkerk – The Netherlands - Phone 0031 (0) 180 420 055 – Fax 0031 (0) 180 499 810

E-mail info@nedmarine.com – Website www.nedmarine.com – www.usaf-nedmarine.com

Registered Chamber of Commerce (KvK) Rotterdam 50358766 ABN AMRO Bank no. 401276015 VAT no. NL 822692144B01

International Banking Account no. NL25ABNA0401276015 – Swift no. ABNANL2A