

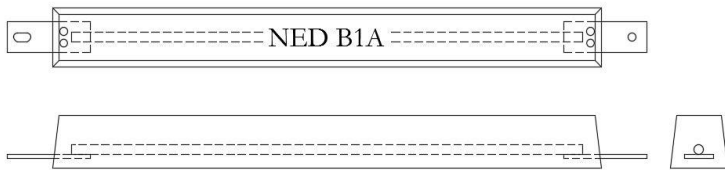
Product catalogue

Anodes

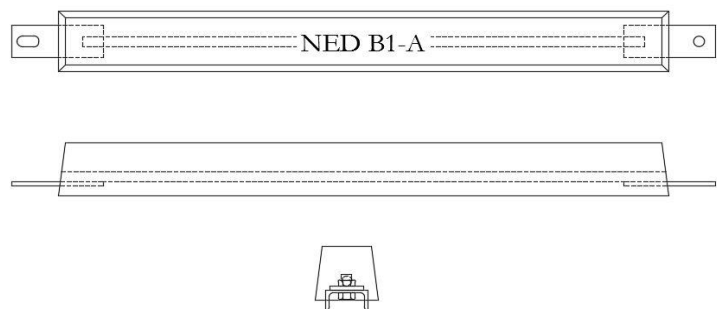


Aluminium

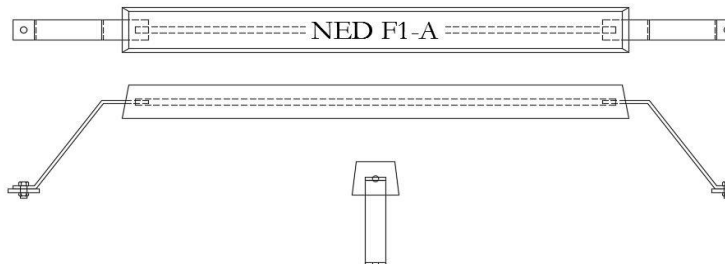
Harbour

NED B1A

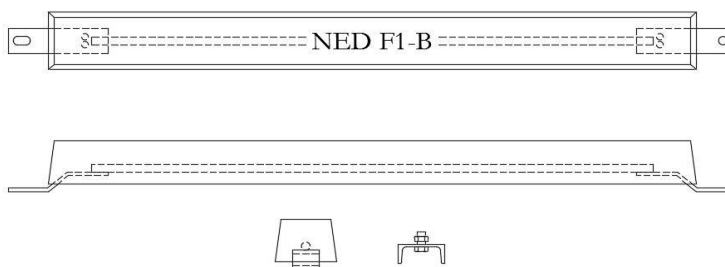
Dimensions	Metric	Imperial
Net weight	: 70,5 kg	155,4 lb
Gross weight	: 75,1 kg	165,7 lb
Length	: 1450 mm	4' 9,1"
Length with inserts	: 1690 mm	5' 6,5"
Distance between holes	: 1610 mm	5' 3,4"
Width top	: 118 mm	4,6"
Width bottom	: 152 mm	6,0"
Width inserts	: 80 mm	3,1"
Height	: 135 mm	5,3"
Height inserts	: 10 mm	0,4"

NED B1-A

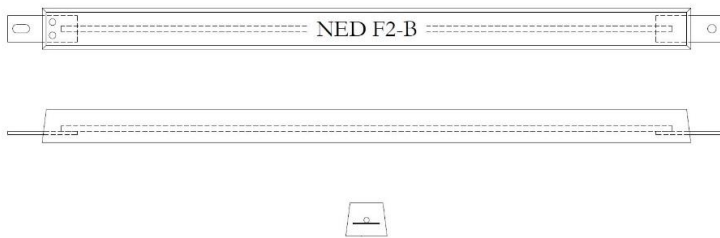
Dimensions	Metric	Imperial
Net weight	: 69,8 kg	153,9 lb
Gross weight	: 77,4 kg	170,5 lb
Length	: 1450 mm	4' 9,1"
Length with inserts	: 1690 mm	5' 6,5"
Distance between holes	: 1610 mm	5' 3,4"
Width top	: 118 mm	4,6"
Width bottom	: 152 mm	6,0"
Width inserts	: 80 mm	3,1"
Height	: 132 mm	5,2"
Height inserts	: 10 mm	0,4"
Clearance	: 25 mm	1,0"

NED F1-A

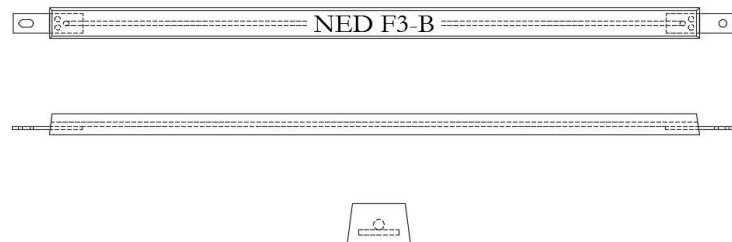
Dimensions	Metric	Imperial
Net weight	: 112,0 kg	246,9 lb
Gross weight	: 129,3 kg	285,1 lb
Length	: 1950 mm	6' 4,8"
Length with inserts	: 2790 mm	9' 1,8"
Distance between holes	: 2710 mm	8' 10,7"
Width top	: 150 mm	5,9"
Width bottom	: 183 mm	7,2"
Width inserts	: 80 mm	3,1"
Height	: 136 mm	5,4"
Height inserts	: 12 mm	0,5"
Clearance	: 292 mm	11,5"

NED F1-B

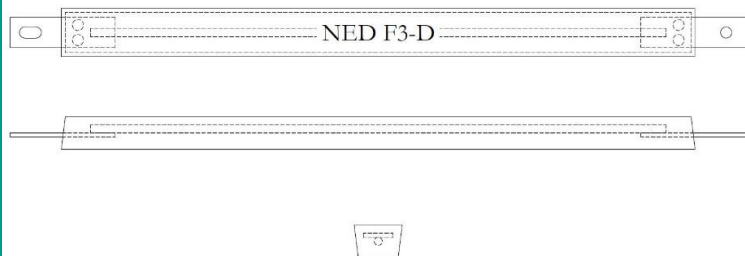
Dimensions	Metric	Imperial
Net weight	: 115,81 kg	255,3 lb
Gross weight	: 126,86 kg	279,7 lb
Length	: 1950 mm	6' 4,8"
Length with inserts	: 2190 mm	7' 2,9"
Distance between holes	: 2110 mm	6' 11,1"
Width top	: 150 mm	5,9"
Width bottom	: 183 mm	7,2"
Width inserts	: 80 mm	3,1"
Height	: 136 mm	5,4"
Height inserts	: 12 mm	0,5"

NED F2-B

Dimensions	Metric	Imperial
Net weight	: 58,0 kg	127,8 lb
Gross weight	: 63,3 kg	139,5 lb
Length	: 1950 mm	6' 4,8"
Length with inserts	: 2170 mm	7' 1,4"
Distance between holes	: 2090 mm	6' 10,3"
Width top	: 100 mm	3,9"
Width bottom	: 125 mm	4,9"
Width inserts	: 80 mm	3,1"
Height	: 100 mm	3,9"
Height inserts	: 10 mm	0,4"

NED F3-B

Dimensions	Metric	Imperial
Net weight	: 28,98 kg	63,89 lb
Gross weight	: 33,35 kg	73,52 lb
Length	: 1950 mm	6' 4,8"
Length with inserts	: 2170 mm	7' 1,4"
Distance between holes	: 2090 mm	6' 10"
Width top	: 80 mm	3,1"
Width bottom	: 96 mm	3,8"
Width inserts	: 60 mm	2,4"
Height	: 65 mm	2,6"
Height inserts	: 8 mm	0,3"

NED F3-D

Dimensions	Metric	Imperial
Net weight	: 18,36 kg	40,47 lb
Gross weight	: 21,62 kg	47.66 lb
Length	: 1250 mm	4' 1,2"
Length with inserts	: 1470 mm	4' 9,9"
Distance between holes	: 1390 mm	4' 6,7"
Width top	: 80 mm	3,1"
Width bottom	: 96 mm	3,8"
Width inserts	: 60 mm	2,4"
Height	: 65 mm	2,6"
Height inserts	: 8 mm	0,3"

PERFECTION IN INSPECTION

PERFECTION FOR PROTECTION



- * Ultrasonic Thickness measurements
- * New Building Inspections
- * Coating Inspections
- * Pré Conditional Survey
- * Dry-Dock Supervision
- * Superintendence
- * Hull Condition Monitoring
- * P&S Surveys
- * Hatch Tightness Testing
- * Leak Detection
- * Reporting
- * NDT Inspections

* Sacrificial Anodes



* Maritime Products

Perfection in Inspection

Perfection for Protection

Version 1.0

Ned Marine Services B.V. – Wolweverstraat 43 CE Ridderkerk – The Netherlands - Phone 0031 (0) 180 420 055

E-mail info@nedmarine.com – Website www.nedmarine.com – www.usaf-nedmarine.com

Registered Chamber of Commerce (KvK) Rotterdam 50358766 ABN AMRO Bank no. 401276015 VAT no. NL 822692144B01

International Banking Account no. NL25ABNA0401276015 – Swift no. ABNANL2A